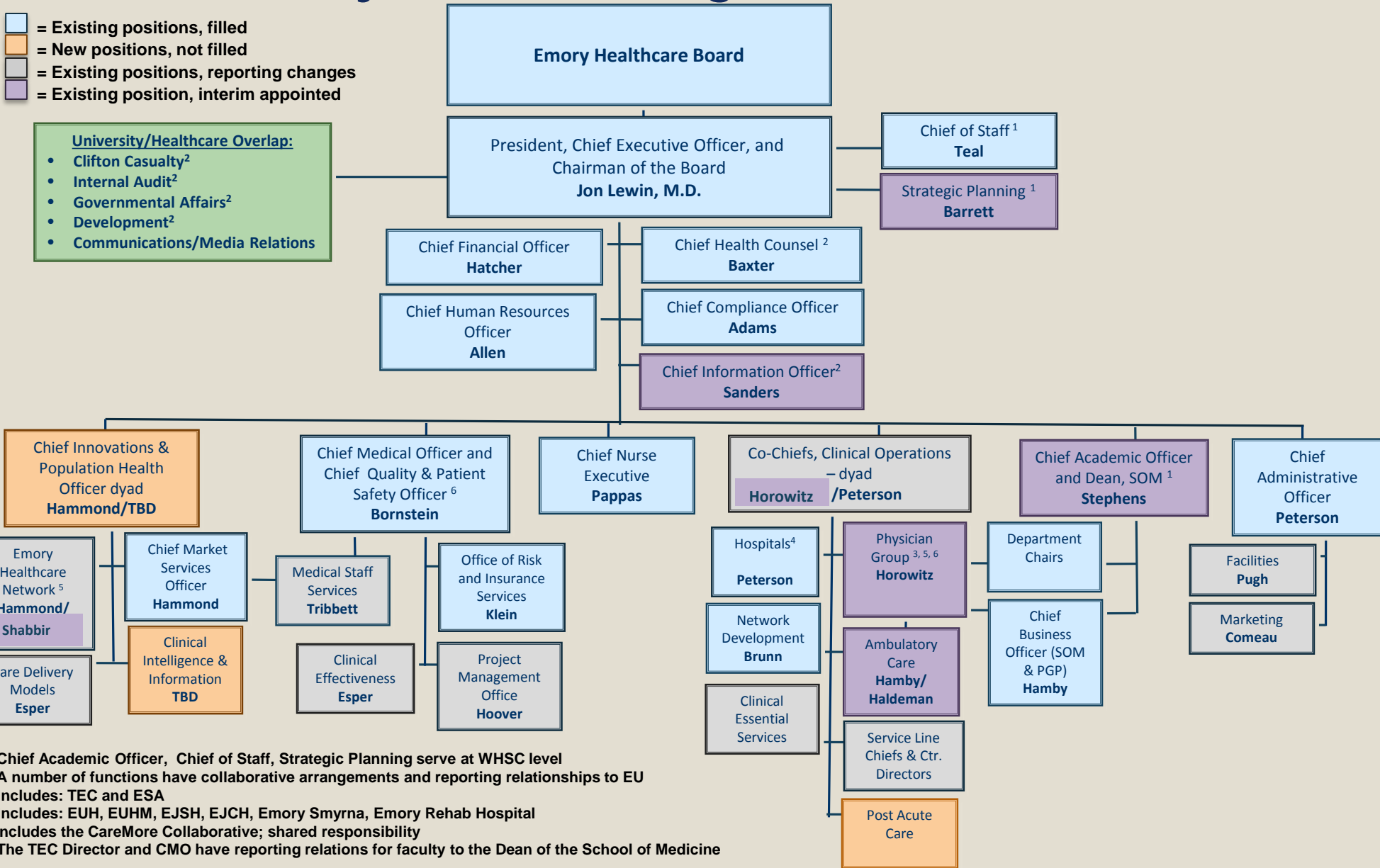


Emory Healthcare Organizational Chart

- = Existing positions, filled
- = New positions, not filled
- = Existing positions, reporting changes
- = Existing position, interim appointed

University/Healthcare Overlap:

- Clifton Casualty²
- Internal Audit²
- Governmental Affairs²
- Development²
- Communications/Media Relations



¹ Chief Academic Officer, Chief of Staff, Strategic Planning serve at WHSC level
² A number of functions have collaborative arrangements and reporting relationships to EU
³ Includes: TEC and ESA
⁴ Includes: EUH, EUHM, EJSH, EJCH, Emory Smyrna, Emory Rehab Hospital
⁵ Includes the CareMore Collaborative; shared responsibility
⁶ The TEC Director and CMO have reporting relations for faculty to the Dean of the School of Medicine

Note: This organizational chart illustrates new roles, roles with clarified descriptions or roles with a new scope of responsibility. It does not capture every role or office within each of the units.